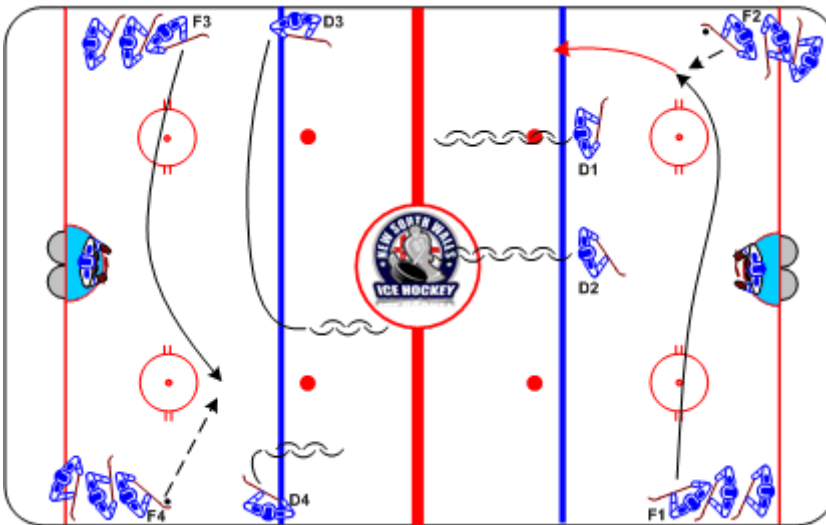




1-on-2

Duration: 7 mins

- F1 skates across ice, receives pass from F2
- F1 vs D1 and D2
- Defense angle F1 to wall or mid-lane as soon as possible
- F3 receives pass from F4 and goes vs D3 and D4, etc



Coaching Tips

- Gap control
- Defense work together to angle to the boards or mid-lane

Execution Tips

- Forwards accelerate with puck
- Clean hits