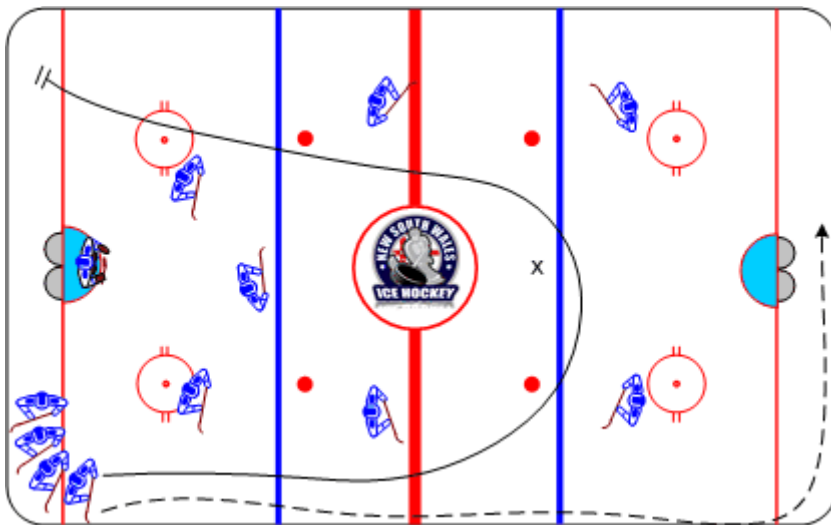




## Baseball

Duration: 5 mins

- **Forward's** shoot puck anywhere on the ice, then skate around the pylon and back over the goal line before Forward's score on goal
- 3 out per inning
- 5 runs maximum per inning



## Coaching Tips

- Teamwork
- Fun

## Execution Tips

- Goalies switch with their teams
- Scoring on the Goalie at centre ice is a home run