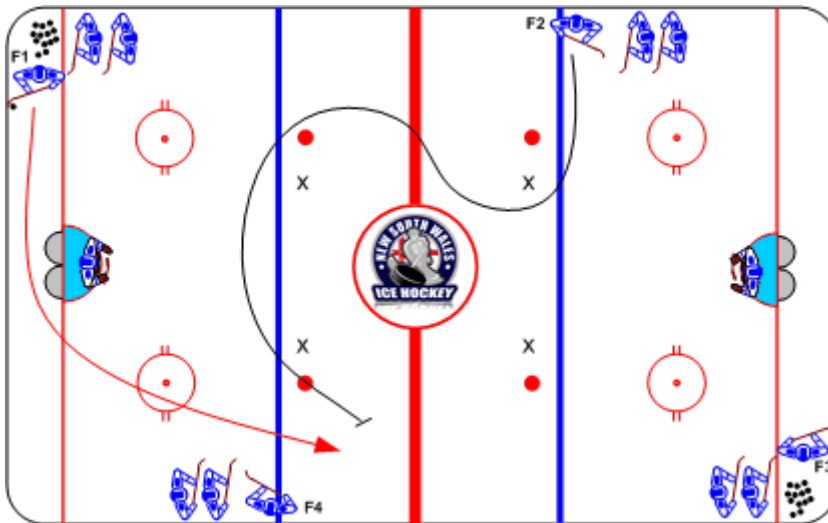




Open Ice Angle "Gate Drill"

Duration: 8 mins

- **F1** and **F2** begin on whistle
- **F1** picks up loose puck and skates behind the net and must skate between the pylons for a shot on goal
- **F2** closes gap, saving ice in the neutral zone, before angling toward **F1**
- **F2** attempts to force **F1** outside the pylons, not giving up the mid-lane



Coaching Tips

- Quick fee for **F2** to close the gap
- Approach on the angle maintaining speed
- Use body position and stick to steer

Execution Tips

- Change lines each repetition
- This is an angling drill not an open ice hit drill