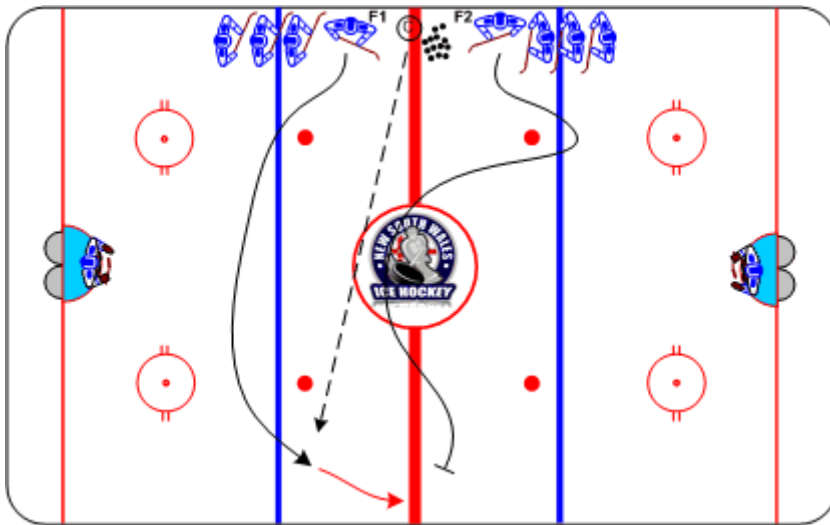




Stampede Angling

Duration: 7 mins

- © passes puck anywhere on one side of ice
- F1 retrieves puck
- F2 double-touches blue line, then closes gap on F1
- F1 and F2 play 1-on-1 for 10 seconds
- On a turnover, the roles are reversed



Coaching Tips

- Close up quickly
- Angle puck-carrier to outside
- Use stick and body to keep F1 from middle

Execution Tips

- F2 requires speed
- Good angling technique
- No backwards skating