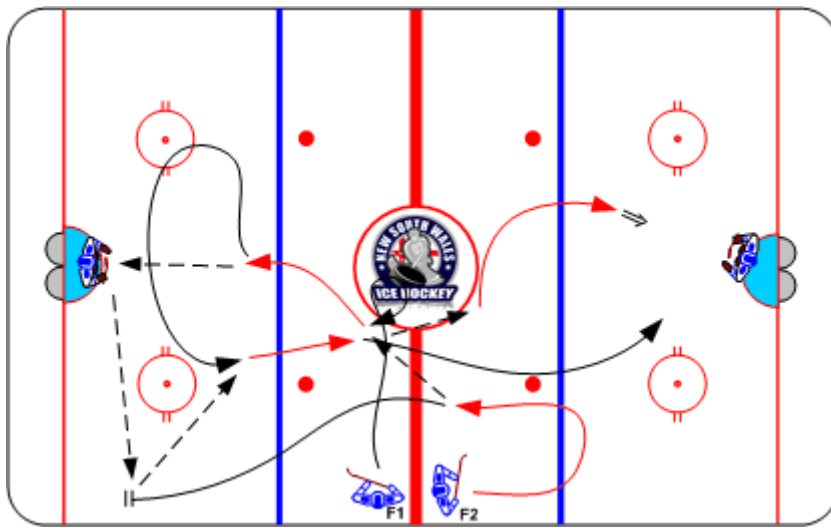


Neutral Zone Crossing Offensive Attack

Duration: 8 mins

- F1 slides off boards, F2 carries puck to blue line
- F2 passes to F1, F1 crosses over blue line for soft shot on goalie
- Goalie passes to F2 anchored low on wall
- F1 supports F2 breakout, receives pass from F2
- F1 carries up mid-lane, F2 diagonal support in neutral zone
- F1 passes to F2 and switch lanes on attack



Coaching Tips

- Anchor support
- Breakout support
- Neutral zone cross, switch lanes

Execution Tips

- F1 must hit net on initial shot