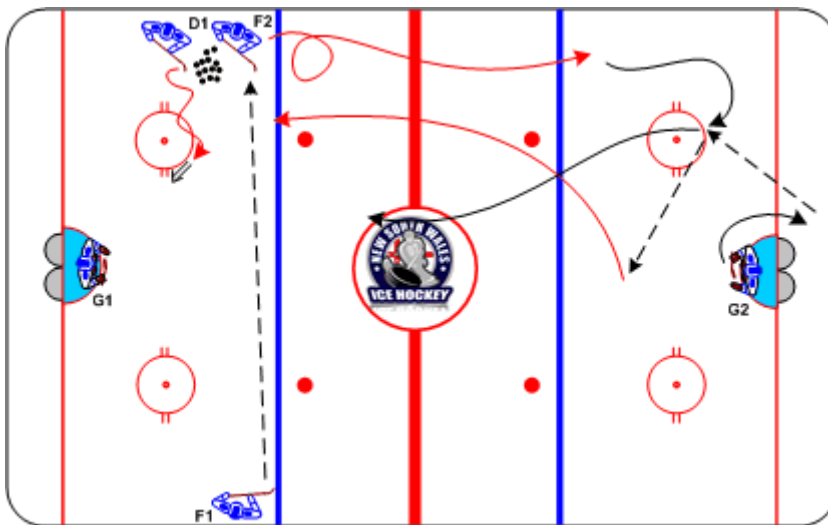




2-on-0, 2-on-1 Drive Delay Review

Duration: 8 mins

- **F1** passes to **F2**, performs evasive move & carries puck through Neutral Zone with soft rim pass at blue line
- **G2** controls puck, outlet pass to **F2** anchored low support
- **F1** supports **F2** for quick breakout, attack **G1**, 2 vs 0
- For 2-on-1, **D1** drag & shoot 2x, accept 2-on-1 challenge



Coaching Tips

- Timing
- Drive delay & cycle
- Neutral Zone tactics
- Goalie mobility

Execution Tips

- As play crosses red line on attack, next group initiates following drill without whistle
- **F2** must anchor in low position