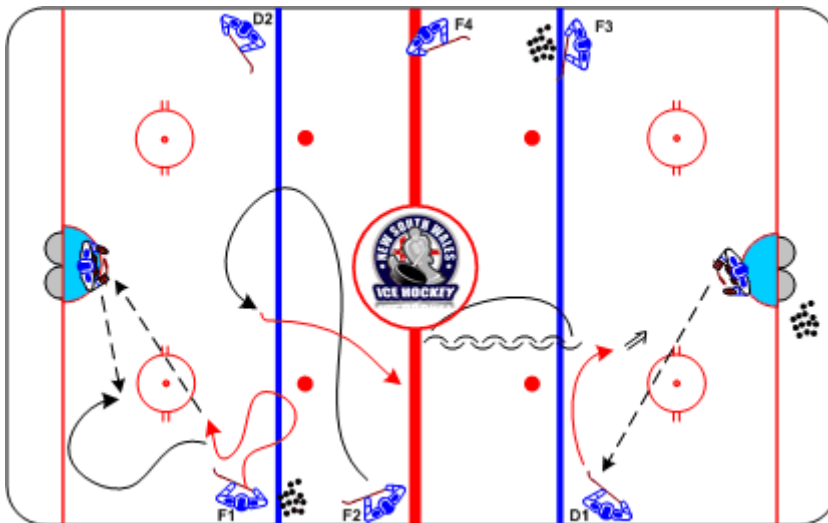




2-on-1 Drive Delay

Duration: 8 mins

- Progression from previous drill
- As drill is started by F1 & F2, D1 drags across blue line and shoots
- D1 closes gap in Neutral Zone and plays 2-on-1 with F1 & F2



Coaching Tips

- Force play to outside
- Creativity
- Communication

Execution Tips

- Both sides may go at same time
- Next drill begins as soon as play is made on net