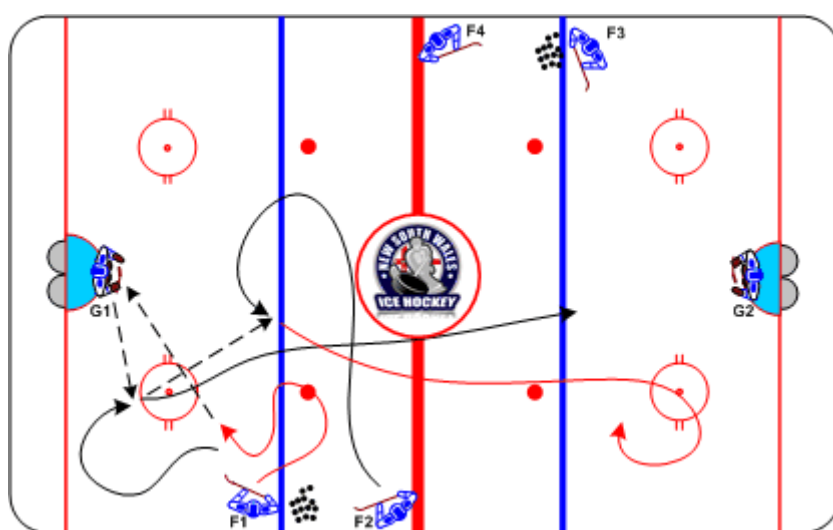




## 2-on-0 Drive Delay

Duration: 8 mins

- **F1** initiate with agility puck control, pass to **G1**
- **F1** anchors low for support, **G1** saucer pass to **F1**
- **F2** time breakout, **F1** one-touch pass to **F2**
- **F2** wide attack, drive delay
- **F1** mid-lane drive support
- Attack **G2**



### Coaching Tips

- Neutral Zone evasive lateral skate on wide drive to create time and space
- One-touch passing
- Anchor support

### Execution Tips

- **F3, F4** initiate after play is made on **G2** with no whistle